

Supplementary Materials: *Naja atra* Cardiotoxin 3 Elicits Autophagy and Apoptosis in U937 Human Leukemia Cells through the Ca²⁺/PP2A/AMPK Axis

Jing-Ting Chiou, Yi-Jun Shi, Liang-Jun Wang, Chia-Hui Huang, Yuan-Chin Lee and Long-Sen Chang

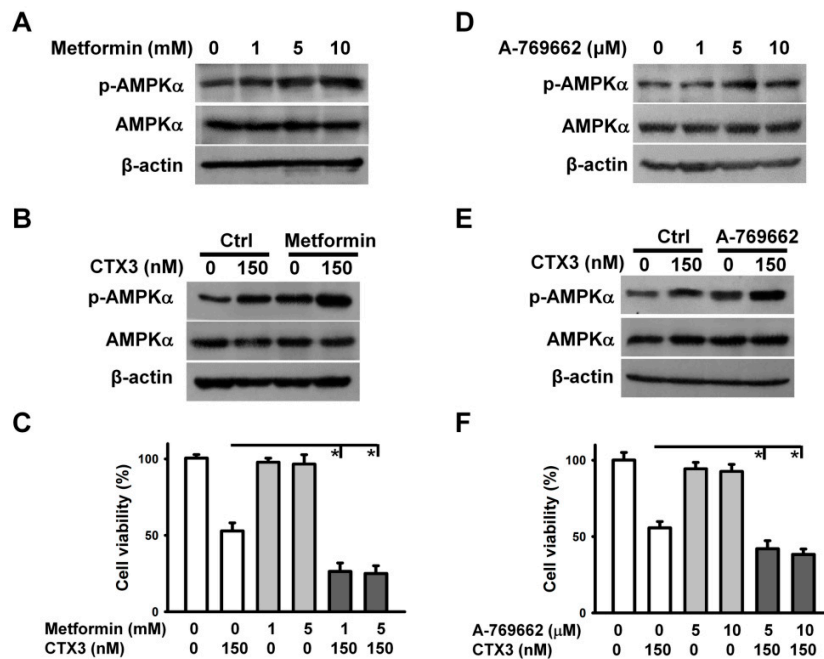


Figure S1. Effect of metformin and A-769662 on CTX3-induced cell death and AMPK α phosphorylation. Without specific indication, U937 cells were treated with 150 nM CTX3 for 4 h. (A) Effect of metformin on AMPK α phosphorylation in U937 cells. U937 cells were incubated with indicated metformin concentrations for 4 h; (B) Metformin enhanced CTX3-induced AMPK α phosphorylation. U937 cells were co-treated with 1 mM metformin and 150 nM CTX3 for 4 h; (C) Metformin enhanced CTX3-induced cell death. U937 cells were co-treated with indicated metformin and CTX3 concentrations for 4 h (mean \pm SD, * p < 0.05); (D) Effect of A-769662 on AMPK α phosphorylation in U937 cells. U937 cells were incubated with indicated A-769662 concentrations for 4 h; (E) A-769662 enhanced CTX3-induced AMPK α phosphorylation. U937 cells were co-incubated with 5 μ M A-769662 and 150 nM CTX3 for 4 h; (F) A-769662 enhanced CTX3-induced cell death. U937 cells were incubated with indicated A-769662 and CTX3 concentrations for 4 h.

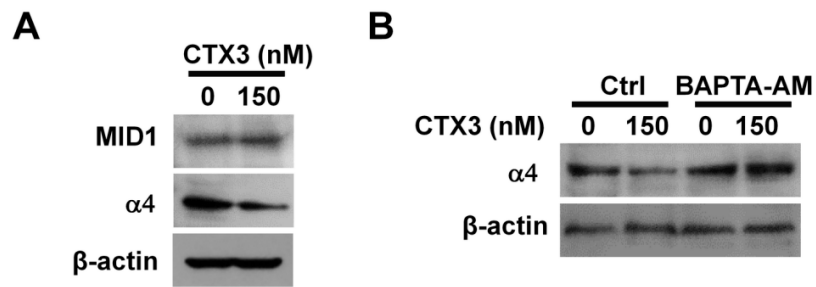


Figure S2. Effect of CTX3 on α 4 and MID1 expression in CTX3-treated cells. Without specific indication, U937 cells were treated with 150 nM CTX3 for 4 h. On the other hand, U937 cells were pre-treated with 10 μ M BAPTA-AM for 1 h, and then incubated with 150 nM CTX3 for 4 h. (A) Western blot analyses of α 4 and MID1 expression in CTX3-treated cells; (B) Effect of BAPTA-AM on α 4 expression in CTX3-treated cells.