

Supplementary Materials: Role of Shiga Toxins in Cytotoxicity and Immunomodulatory Effects of *Escherichia coli* O157:H7 during Host-Bacterial Interactions in vitro

Andrea Cecilia Bruballa, Carolina Maiumi Shiromizu, Alan Mauro Bernal, Gonzalo Ezequiel Pineda, Florencia Sabbione, Analia Silvina Trevani, Leticia Verónica Bentancor, María Victoria Ramos, Romina Jimena Fernández-Brando, Manuel Javier Muñoz and Marina Sandra Palermo *

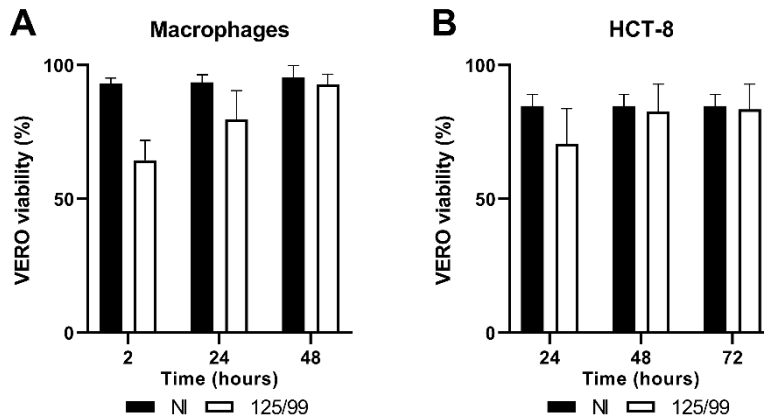


Figure S1. Stx2 activity in lysates from infected macrophages and HCT-8 cells. Lysates from macrophages (A) or HCT-8 cells (B) were obtained at the indicated times after infection with 125/99. Lysates of non-infected cells were used as controls (NI) and all values were normalized considering Vero cells cultured in medium 1:2 PBS without any lysates 100% viability. Data represent mean \pm SEM for biological replicates (n = 3).