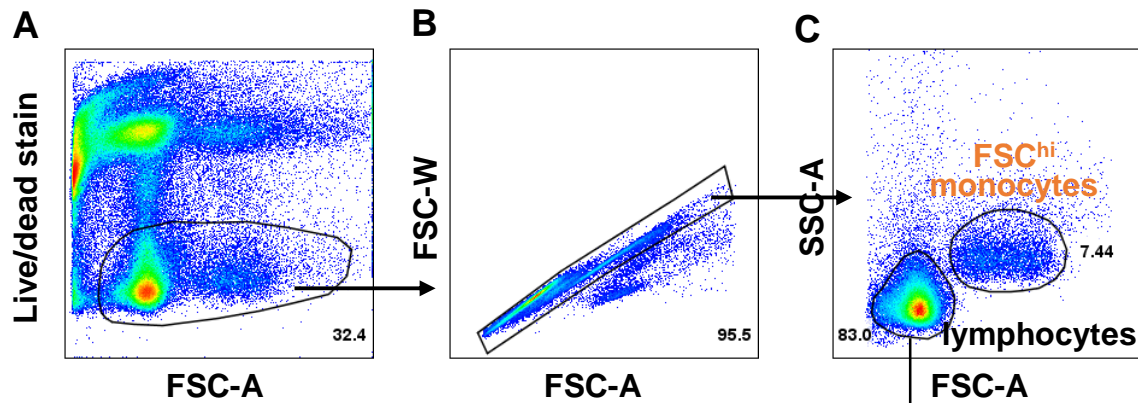
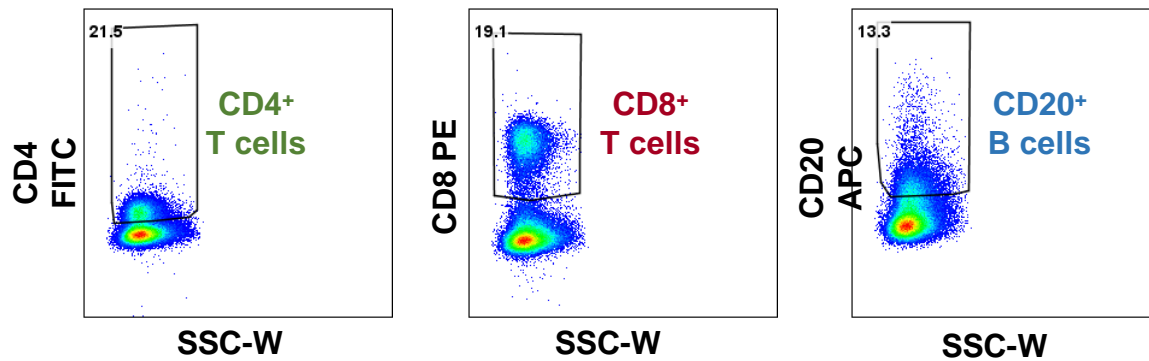


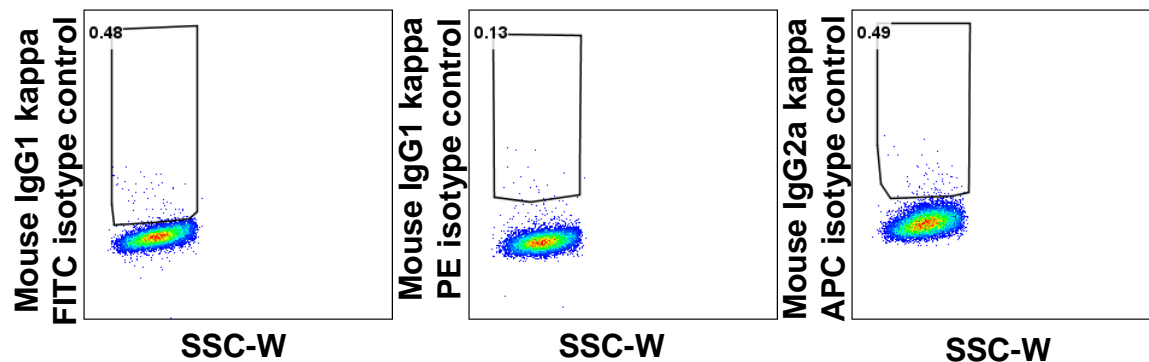
Supplementary Figure S1. Gating strategy used in flow cytometric analyses of PBMC.



D



FMO controls



Legend to Figure S1: Gating strategy used in flow cytometric analyses of PBMC.

Representative pseudocolor plots are shown. After exclusion of dead cells (**A**) and doublets (**B**), gating on lymphocytes and monocytes was performed according to their forward and side scattering (FSC/SSC) properties (**C**). (**D**) Among lymphocytes CD4⁺ T cells, CD8⁺ T cells and CD20⁺ B cells (upper panel) were gated according to the appropriate Fluorescence-minus-one (FMO) controls (lower panel).

Table S1. Primer sequences used for the amplification of nearly whole genome sequences of FeMV-GT2 strains.

Primer name	Nucleotide sequence (5' → 3')	Size of PCR fragment	Position (GenBank Acc.-No. MK182089)
Gordon3'Ende400bpFor	ACCAACCTCAGGAACCACCT	400 bp	1 – 434
Gordon3'Ende400bpRev	ACCAGACAAAGATGTCTGTGACC		
NP-Schmusi-For	ATGTGAGTCTACTGAGGTCACCTTG	1560 bp	108 – 1667
NP-TV2-Rev	GATTCAGAAGGTCAGTATCATTGTAATGG		
Phospho-Gordon-For	ATGTCAGCAGAACAATCCAACAAG	1500 bp	1781 – 3256
Phospho-Gordon-Rev	GTTATTATTCTTGATCAATATCATAACTTTCTC		
Gordon-InterReg3kbFor	TTGAGCAGGTAATGGTTCATTG	3000 bp	3612 – 6894
GordonInterReg3kbRev	CTTTCCTTTAGGCGTAGGG		
Gordon-InterReg1kbFor	ATCGCACTGGAGTTTCTCTTG	1000 bp	4581 – 5490
GordonInterReg1kbRev	TTGCCACTCCAGTCTTACAGG		
Gordon2000bp-For	GTCGGTAAGCCAGGGTTGTA	2000 bp	8335 – 10346
Gordon2000bp-Rev	TGAAGTCATTGTCTGGGGATA		
Gordon6200bp-For	CAAGACCTATCCCAGGCAAA	6200 bp	2384 – 8636
Gordon6200bp-Rev	CCAATCCCAAAGTTGCTTGT		
Gordon-InterReg5kbFor	TCCAAGTACCATTTCGCACAG	5000 bp	3002 – 7761
GordonInterReg5kbRev	CCGACCAAACATGTTGCTAA		
HA-Gordon-For	CAGCGGAAGGACTACTCTTAAT	1800 bp	7138 – 8715
HA-Gordon-Rev	ATTACAGTTTATTAAGTTGAAAATGGCAG		
Gordon-PAR-For	ATGCCTCCAATGGTGC	1300 bp	10044 – 11738
Gordon-HEN-Rev	TGCAAGGACATGCAATTTTT		
Gordon-Poly628bp-For	TGCAAACTTCAGCCATCTG	630 bp	12852 – 13460
Gordon-Poly628bp-Rev	GAGTGGCACGCTATACAACAA		
Gordon-Poly2100bp-For	AGCCTCGGATCAACTAGCAA	2100 bp	11260 – 13361
Gordon-Poly2100bpRev	AGCAATTGCAGTGACCAAAA		
Gordon244bp-For	GATCAATATTAAGATCCAGGTAGTCTT	250 bp	15191 – 15433
Gordon244bp-Rev	TACCCAGTCTTACATGAGAGTCAG		
Gordon5'Ende800bpFor	ACCAGACAAAGAAAGCTATAGGTCC	820 bp	15229 – 16047
Gordon5'Ende800bpRev	CAGGTGCATTGCATTGAAGT		