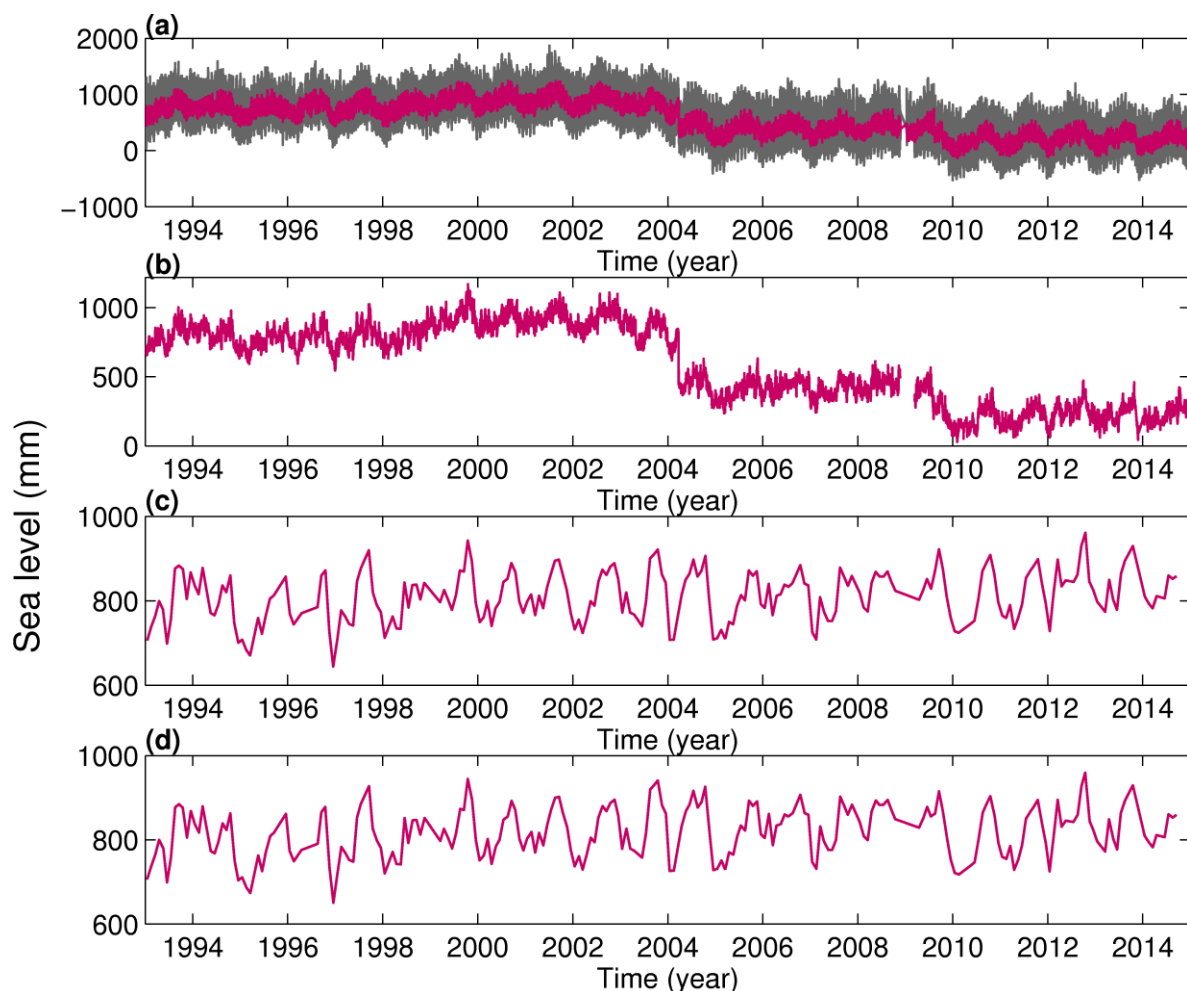


# Supplementary Document: Impact of Geophysical and Datum Corrections on Absolute Sea-Level Trends from Tide Gauges around Taiwan, 1993–2015

Wen-Hau Lan, Chung-Yen Kuo, Huan-Chin Kao, Li-Ching Lin, C. K. Shum, Kuo-Hsin Tseng and Jung-Chieh Chang

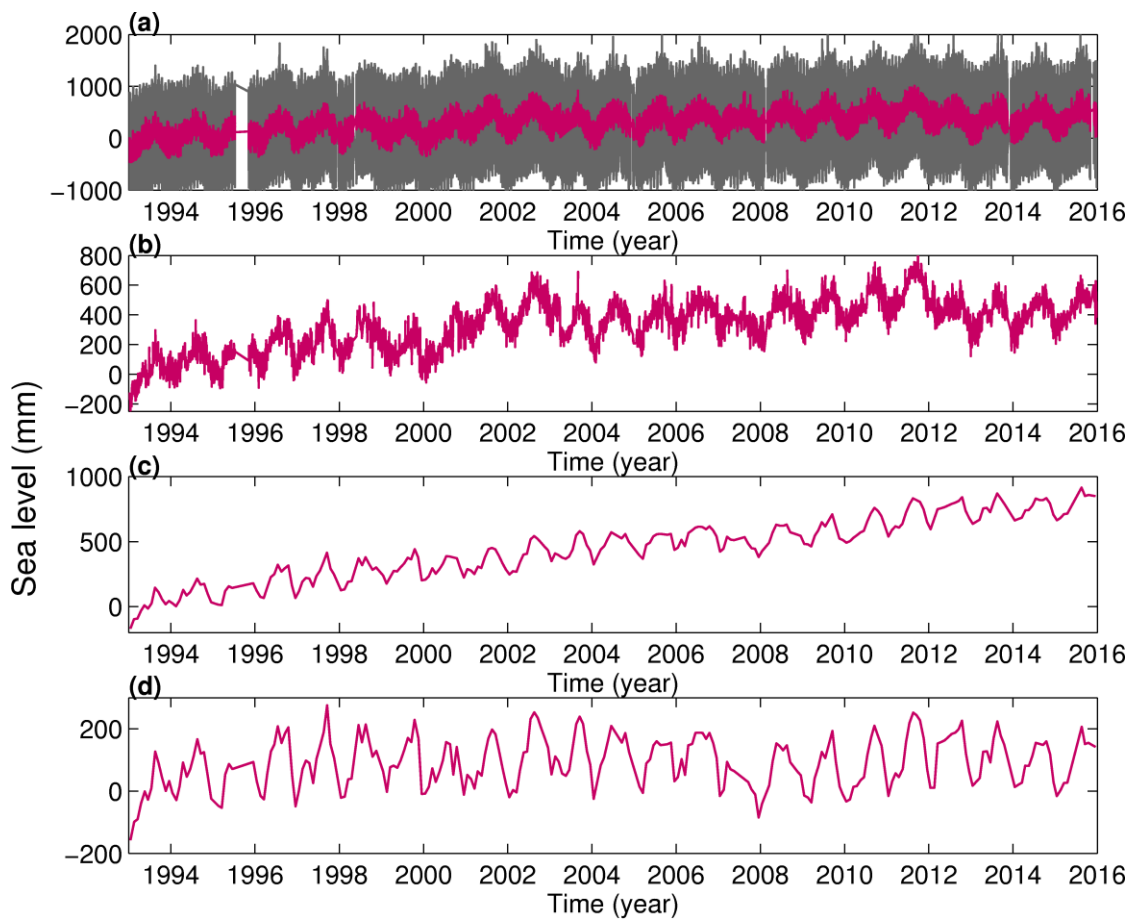
This document contains two tide gauge time series, Kaohsiung and Dongshi, with step-by-step geophysical and datum shifts corrections. All the corrections were applied to the tide gauge records sequentially as follows: ocean tides, IB effect, datum shifts, and vertical land motions. The four panels in a figure show the tide gauge records with (a) ocean tides correction, (b) ocean tides and IB corrections, (b) ocean tides, IB, and datum shift corrections, and (d) ocean tides, IB, datum shifts, vertical land motions corrections.

## 1. Kaohsiung



**Figure S1:** Sea level variations from Kaohsiung tide gauge records with (a) ocean tides correction (gray line : raw data and red line : corrected for ocean tides), (b) ocean tides and IB corrections, (b) ocean tides, IB, and datum shift corrections, and (d) ocean tides, IB, datum shifts, vertical land motions corrections.

## 2. Dongshi



**Figure S2:** Sea level variations from Dongshi tide gauge records with (a) ocean tides correction (gray line : raw data and red line : corrected for ocean tides), (b) ocean tides and IB corrections, (b) ocean tides, IB, and datum shift corrections, and (d) ocean tides, IB, datum shifts, vertical land motions corrections.



© 2017 by the authors. Submitted for possible open access publication under the terms and conditions of the Creative Commons Attribution (CC BY) license (<http://creativecommons.org/licenses/by/4.0/>).