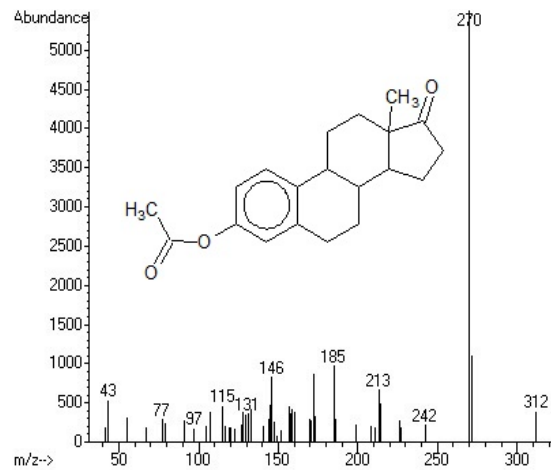
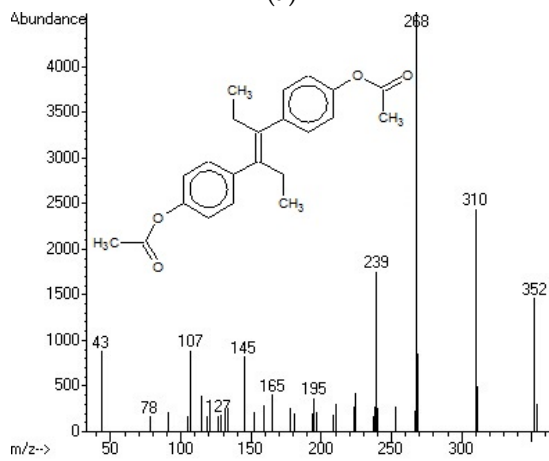


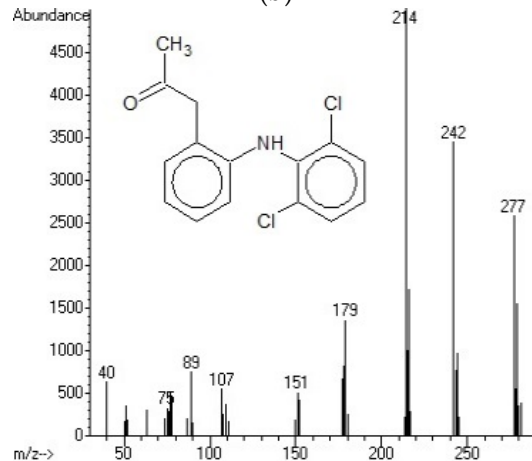
(a)



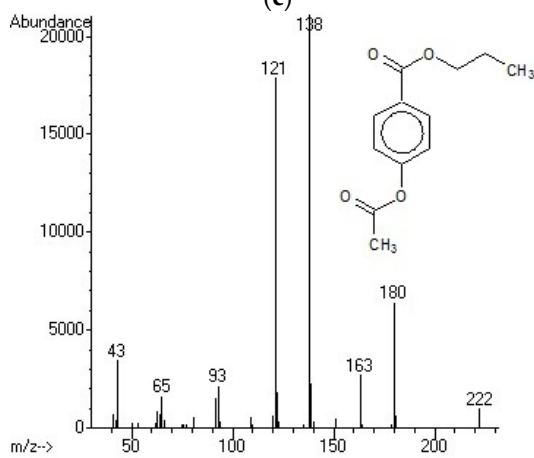
(b)



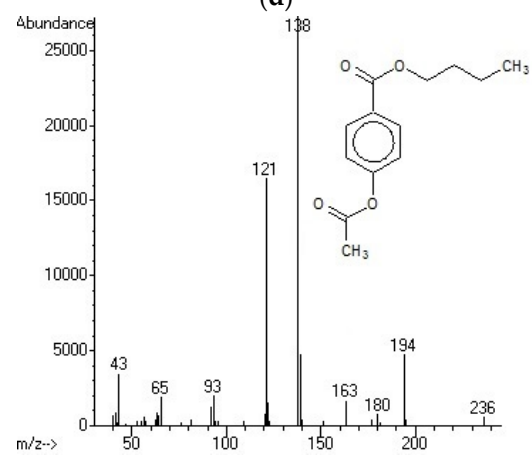
(c)



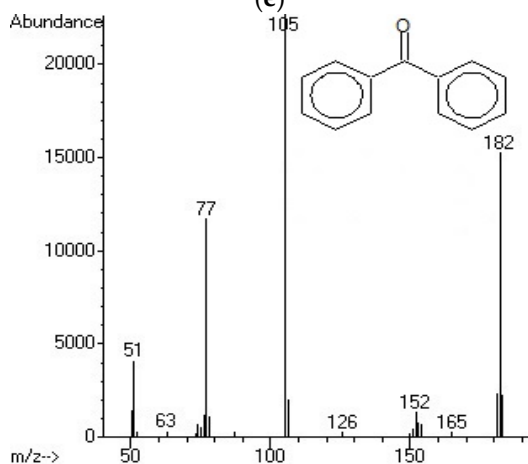
(d)



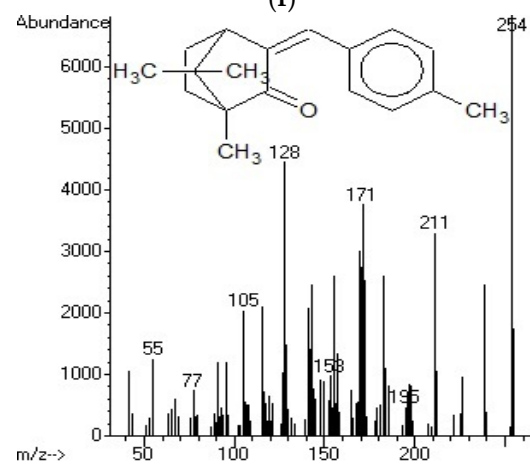
(e)



(f)



(g)



(h)

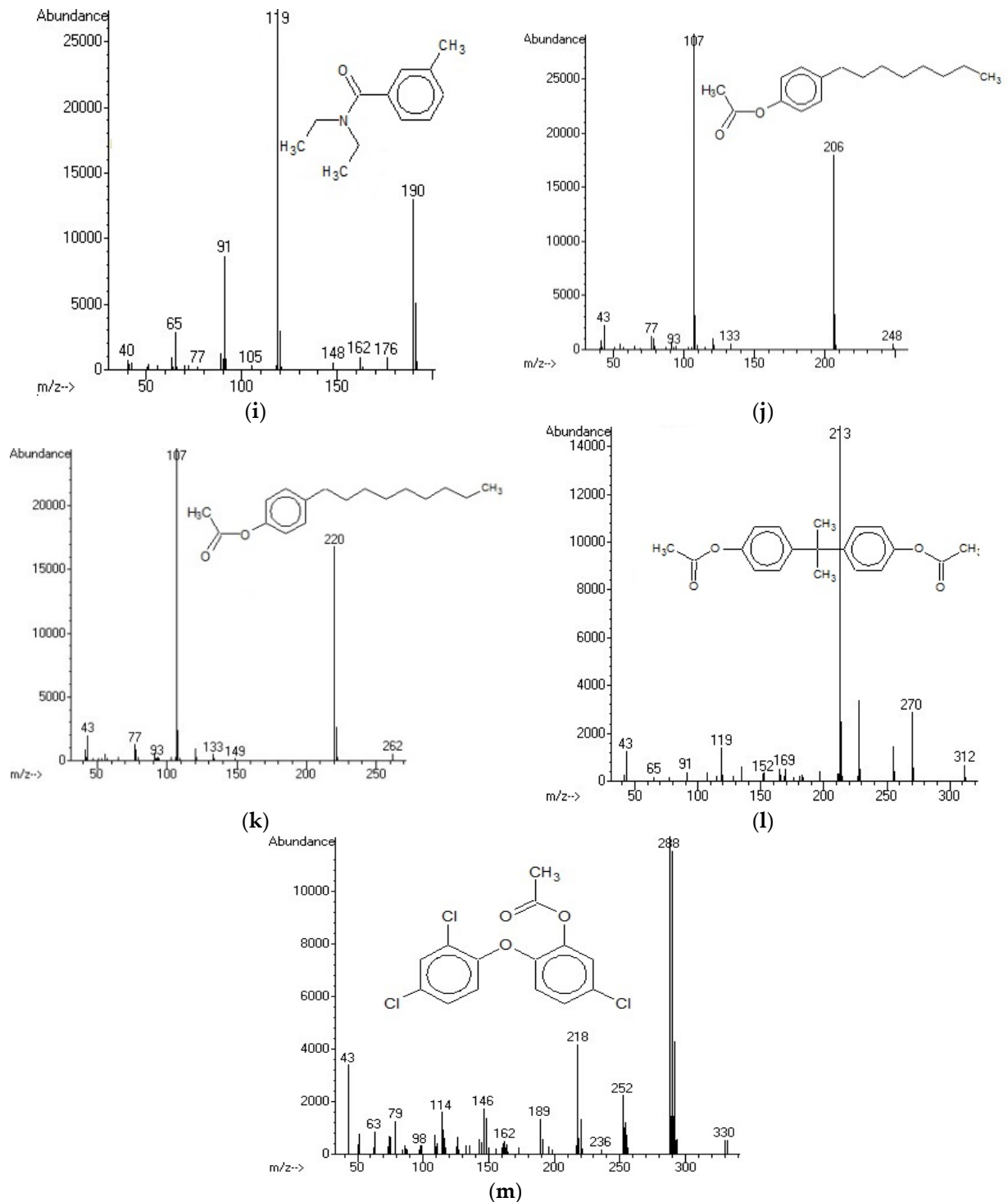


Figure S1. The MS spectra of target compounds registered after USAEME-SFOD with acetylation: (a) β -estradiol, (b) estrone, (c) diethylstilbestrol, (d) diclofenac, (e) propylparaben, (f) butylparaben, (g) benzophenone, (h) 3-(4-methylbenzylidene)camphor, (i) N,N-diethyltoluamide, (j) 4-t-octylphenol, (k) 4-n-nonylphenol, (l) bisphenol A, (m) triclosan.