

Glycosylphosphatidylinositol Anchors from Galactomannan and GPI-Anchored Protein Are Synthesized by Distinct Pathways in *Aspergillus fumigatus*

Jizhou Li ¹, Isabelle Mouyna ¹, Christine Henry ¹, Frédérique Moyrand ², Christian Malosse ³, Julia Chamot-Rooke ³, Guilhem Janbon ², Jean-Paul Latgé ¹ and Thierry Fontaine ^{1,*}

¹ Unité des Aspergillus, 25 rue du Docteur Roux, Institut Pasteur, 25 rue du Docteur Roux, 75015 Paris, France; lee19910503@gmail.com (J.L.); imouyna@pasteur.fr (I.M.); chenry@pasteur.fr (C.H.); jplatge@pasteur.fr (J.-P.L.); thierry.fontaine@pasteur.fr (T.F.)

² Unité de Biologie des ARN des Pathogènes Fongiques, Institut Pasteur, 25 rue du Docteur Roux, 75015 Paris, France; frederique.moyrand@pasteur.fr (F.M.); guilhem.janbon@pasteur.fr (G.J.)

³ Unité de Spectrométrie de Masse pour la Biologie, Institut Pasteur, CNRS USR 2000, 28 rue du Docteur Roux, 75015 Paris, France; cmalosse@pasteur.fr (C.M.); julia.chamot-rooke@pasteur.fr (J.C.-R.)

* Correspondence: thierry.fontaine@pasteur.fr; Tel.: +33-145-688-358

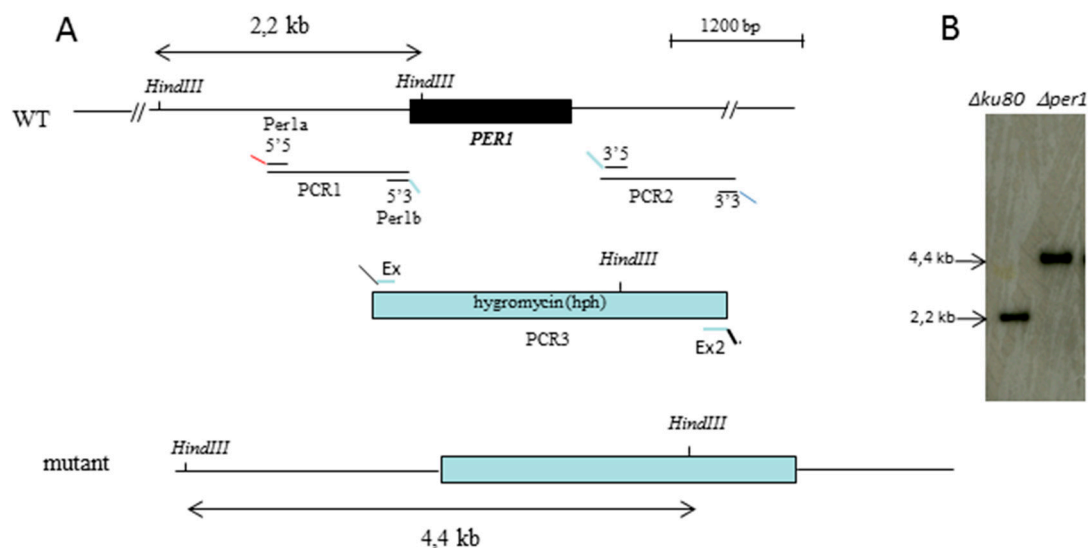


Figure S1. (A) Construction of $\Delta per1$ mutant by PCR fusion. (B) Southern blot analysis: Genomic DNA has been digested by *HindIII* and hybridized with PCR1 probe amplified with primers Per1a-Per1b.

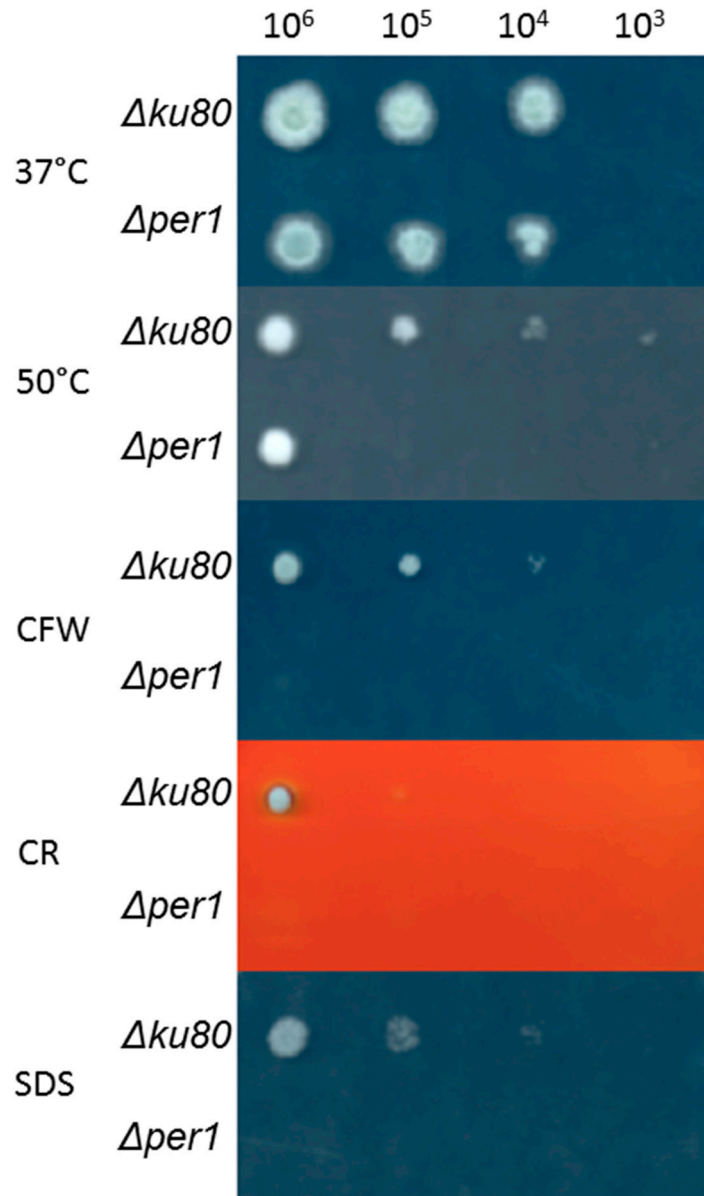


Figure S2. Growth of PER1 deletion mutant strain on solid minimum medium. Radial growth of the parental strain and PER1 deletion mutant strain on malt agar medium (48–72 h at 37 °C or 50 °C) with or without calcofluor white (CFW, 40 μg/mL), Congo red (CR, 50 μg/mL), SDS (0.01%).

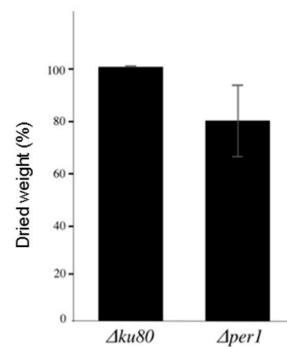


Figure S3. Growth of PER1 deletion mutant strain on Liquid Sabouraud medium. Growth was estimated as the measure of the dried weight of biomass.

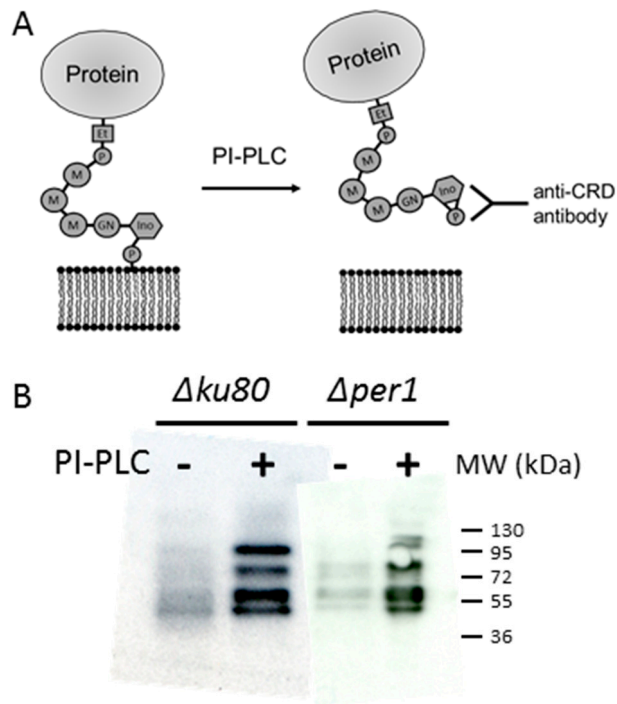


Figure S4. Detection of purified GPI-Aps. **(A)** Scheme of detection using a PI-phospholipase C and an anti-CRD antibody. **(B)** Western blot of GPI-APs fraction purified from parental ($\Delta ku80$) and $\Delta per1$ mutant strains.

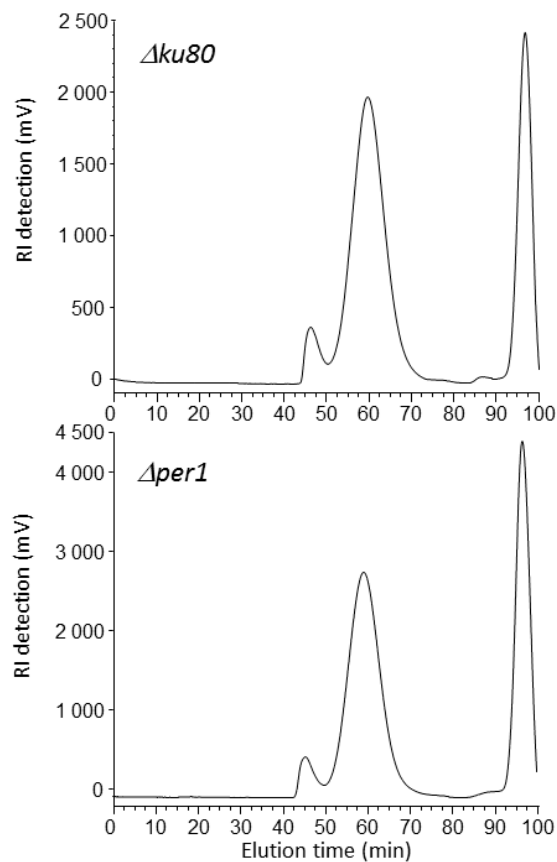


Figure S5. Gel filtration chromatography on Superdex 75 of purified LGM fraction from $\Delta ku80$ and $\Delta per1$ strains. Prior to the analysis, LGM was submitted to a nitrous deamination. Products were detected by a RI detector.

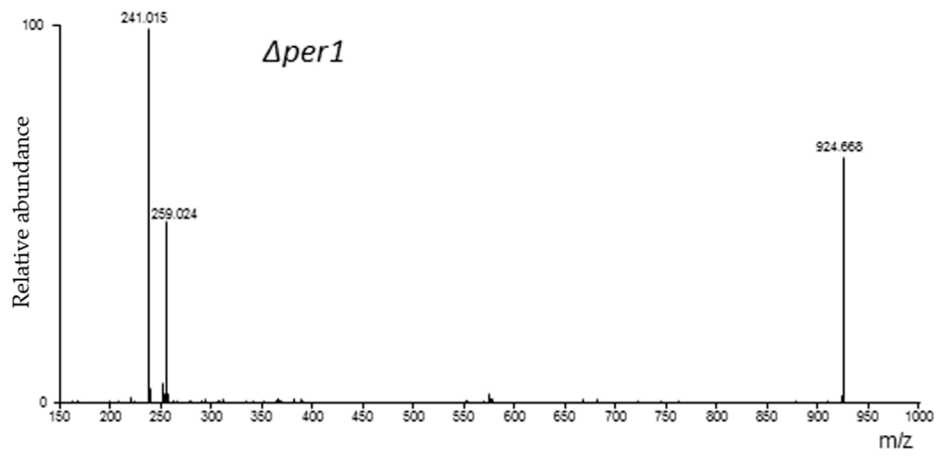
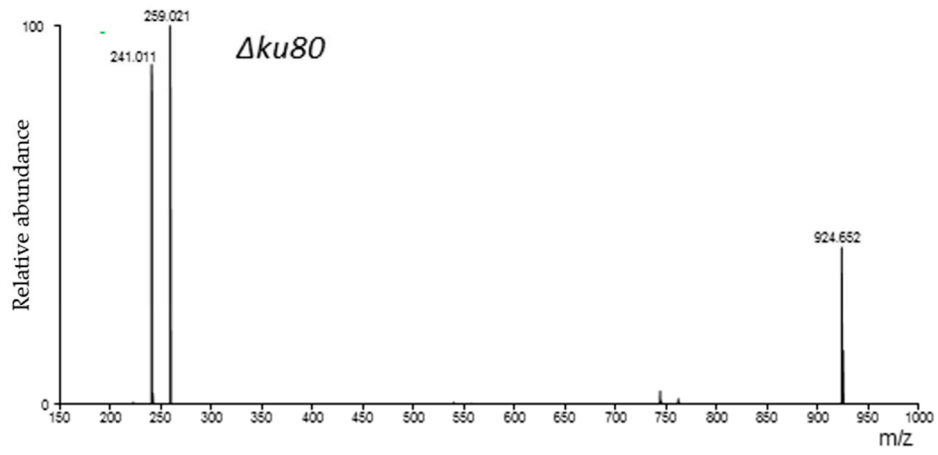


Figure S6. MS-MS spectra of the ion m/z 924.650 of the lipid anchor of LGM isolated from the parental strain ($\Delta ku80$) and from the mutant strain ($\Delta per1$).

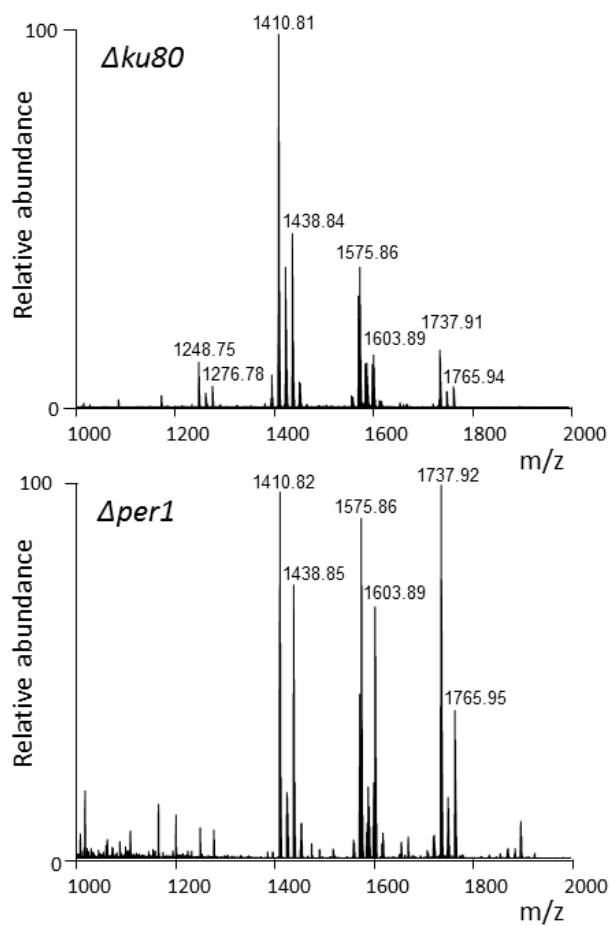


Figure S7. MS spectra of GIPC fraction isolated from parental ($\Delta ku80$) and $\Delta per1$ mutant strains. The MS data of GIPC fractions from $\Delta ku80$ and $\Delta per1$ were similar with the presence of characteristic ions [M-H]⁻ at m/z 1410.8, 1572.8, 1575.9 and 1737.9 corresponding to the presence of 3 or 4 hexose residues with or without a choline-phosphate group linked to a IPC [38].

Table S1. Primers used in the paper.

Name	Sequence
Primers used to construct the <i>per1Δ::HYG</i> deletion cassette	
AFUB_006580-3'3	GCGGATAACAATTTACACACAGGAAACAGCGATTATGGCTCGCAGTGACC
AFUB_006580-3'5	CTCCTTCAATATCATCTTCTGTCTCCAACACGCGTTCCCAGAATGATGTCTCAAGCCGC
AFUB_006580-5'5	GTAACGCCAGGGTTTTCCCAGTCACGACGCTCATGAATGCCTTAGCACGG
AFUB_006580-5'3	ATCCACTTAACGTTACTGAAATCTCCTTACCATGGTGCTAATGGAGTGG
AFUB_006580-Ex	ATCCACTTAACGTTACTGAAATCTCCTTACCATGGTGCTAATGGAGTGG
AFUB_006580-Ex2	AACGAAGTGTCAGCATCGAGAG
AFUB_006580-MKRr	GGAACGCGTGTGGAGACAGAAGATGATATTGAAGGAG
AFUB_006580-MKRf	GAAGGAGATTTAGTAACGTTAAGTGGAT
Primers used to construct the pNE478 plasmid	
GFPf	GAAGGAGATTTAGTAACGTTAAGTGGATATGGTGAGCAAGGGCGAGGA
GFPPr	AGATCTGGATCCTTTACTTGTACAGCTCGTCC
HygF	AGATCTGTCCAATTGCTTCCGATCTGG
HygR	GTTGGAGACAGAAGATGATATTGAAGGAGCGCGGCCGCGATGAATGTGTCTCTGTAGGC
Primers used to do the DIG probe	
Per1a	CATGAATGCCTTAGCACGG
Per1b	CACTCCATTAGCACCATG

Table S2. Global sugar composition of cell wall AI and AS fractions (%).

	%	%
Alkali-insoluble fraction	<i>Δku80</i>	<i>Δper1</i>
Mannose	12.16 +/- 2.19	7.1 +/- 1.01
Glucose	48.81 +/- 3.25	48.17 +/- 2.26
Galactose	10.96 +/- 1.6	8.52 +/- 0.92
GlcNac	27.71 +/- 1.2	36.2 +/- 4.17
GalNAc	0.35 +/- 0.07	0
Alkali-soluble fraction		
Mannose	3.41 +/- 1.21	3.44 +/- 1.59
Glucose	81.5 +/- 3.48	82.6 +/- 4.74
Galactose	9.3 +/- 1.93	7.91 +/- 3.77
GlcNac	0	0
GalNAc	5.8 +/- 1.14	6.05 +/- 0.64