

Supplementary Information

Table of Content

Figure S1. ^1H NMR (400 MHz) spectrum of (\pm)-pestalachloride D (1) in CDCl_3 .	2
Figure S2. ^{13}C NMR and DEPT (100 MHz) spectra of (\pm)-pestalachloride D (1) in CDCl_3 .	3
Figure S3. EIMS spectrum of (\pm)-pestalachloride D (1).	4
Figure S4. HREIMS spectrum of (\pm)-pestalachloride D (1).	5
Figure S5. HPLC profiles of chiral Crownpak CR (+) column analysis of (\pm)-pestalachloride D (1).	6
Figure S6. ^1H NMR (400 MHz) spectrum of pestalachloride C (2) in CDCl_3 .	6
Figure S7. ^{13}C NMR and DEPT (100 MHz) spectra of pestalachloride C (2) in CDCl_3 .	7
Table S1. ^1H and ^{13}C NMR Data for (\pm)-pestalachloride D (1) and pestalachloride C (2).	8

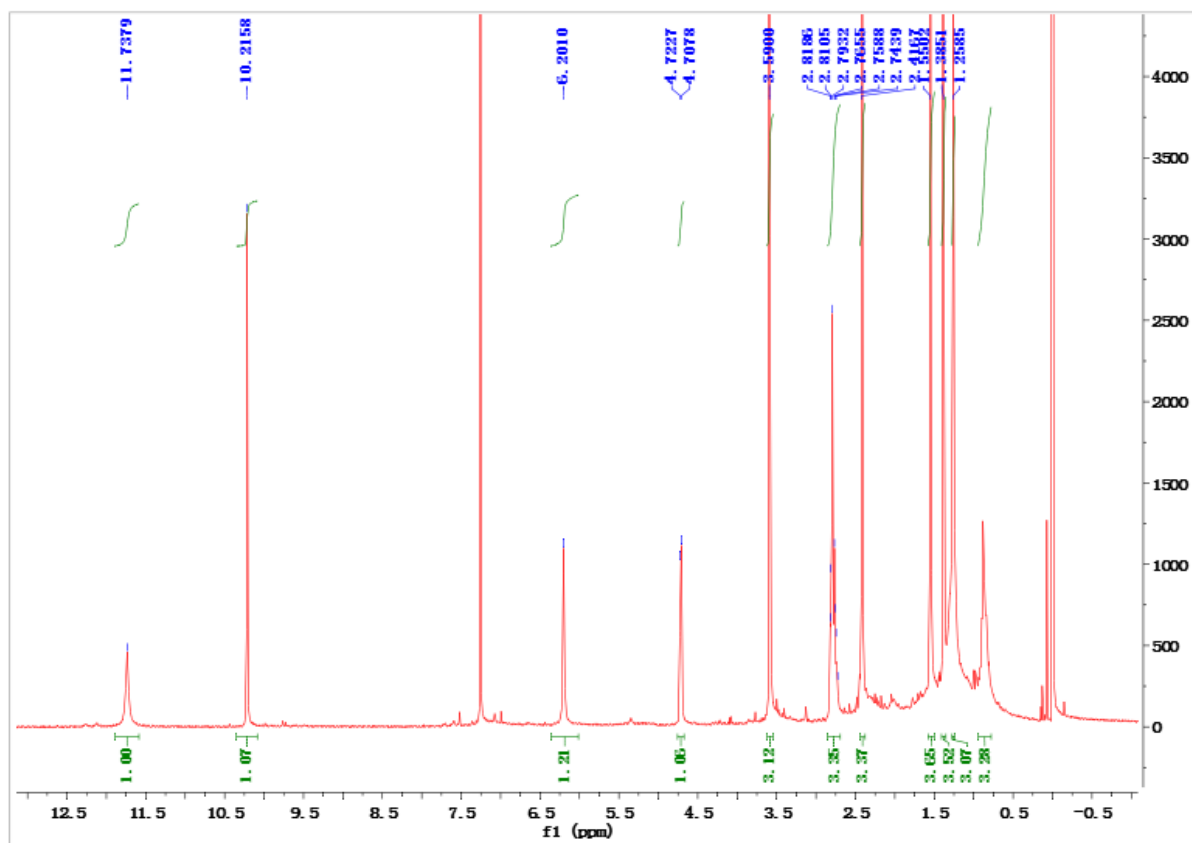
Figure S1. ^1H NMR (400 MHz) spectrum of (\pm)-pestalchloride D (1) in CDCl_3 .

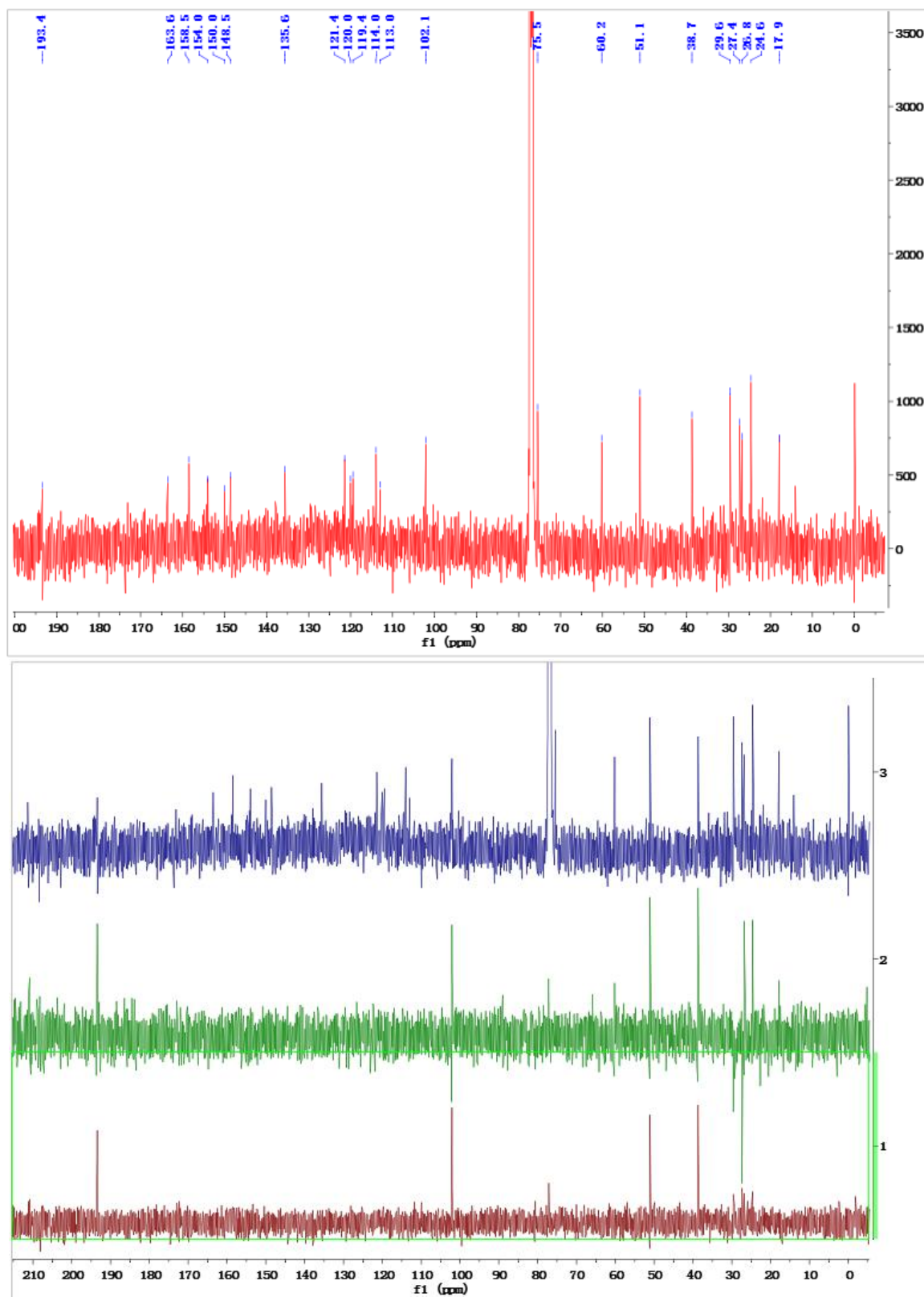
Figure S2. ^{13}C NMR and DEPT (100 MHz) spectra of (\pm)-pestalachloride D (**1**) in CDCl_3 .

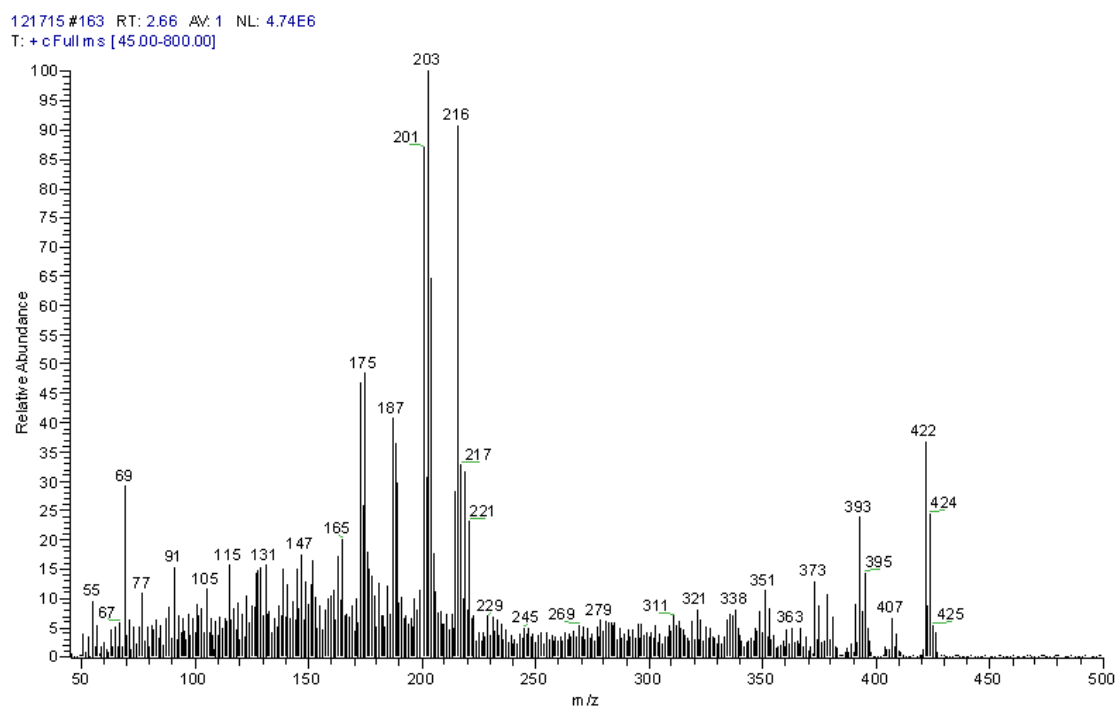
Figure S3. EIMS spectrum of (\pm)-pestalachloride D (1).

Figure S4. HREIMS spectrum of (±)-pestalachloride D (1).

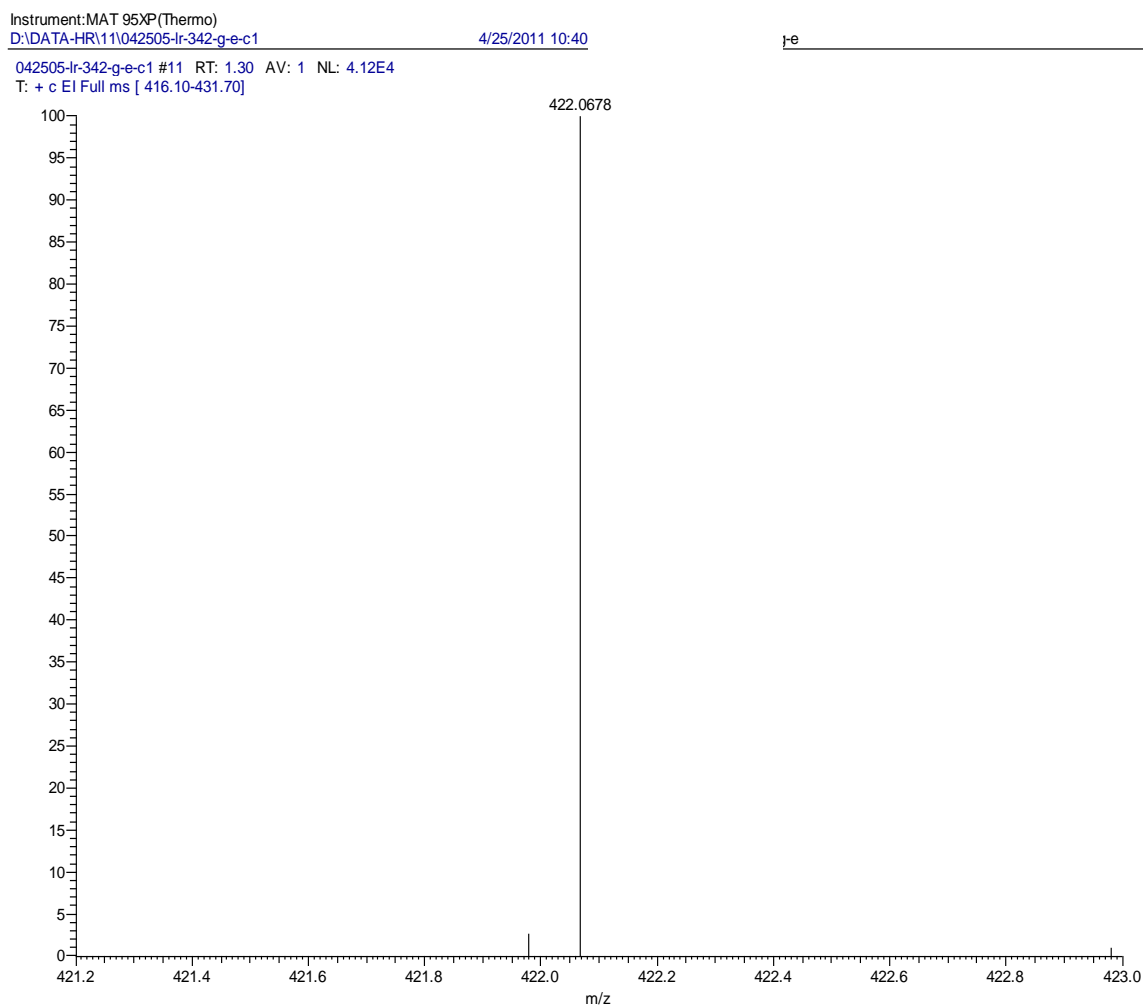
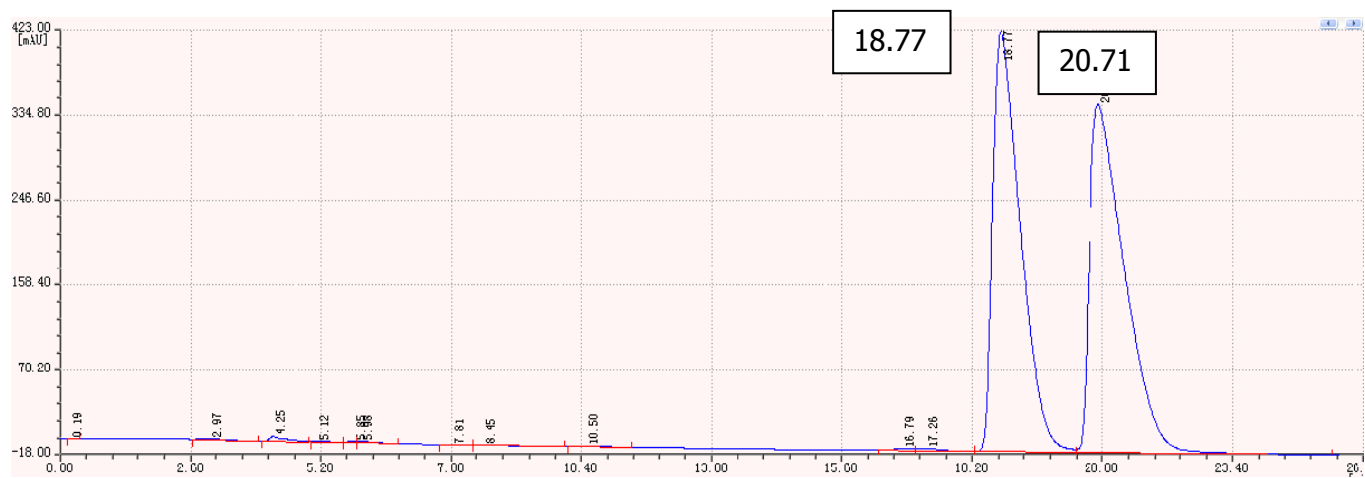


Figure S5. HPLC profiles of chiral Crownpak CR (+) column analysis of (\pm)-pestalachloride D (**1**).



Eluted with 5% isopropanol in *n*-hexane at the flow rate of 0.8 mL/min.

Figure S6. ^1H NMR (400 MHz) spectrum of pestalachloride C (**2**) in CDCl_3 .

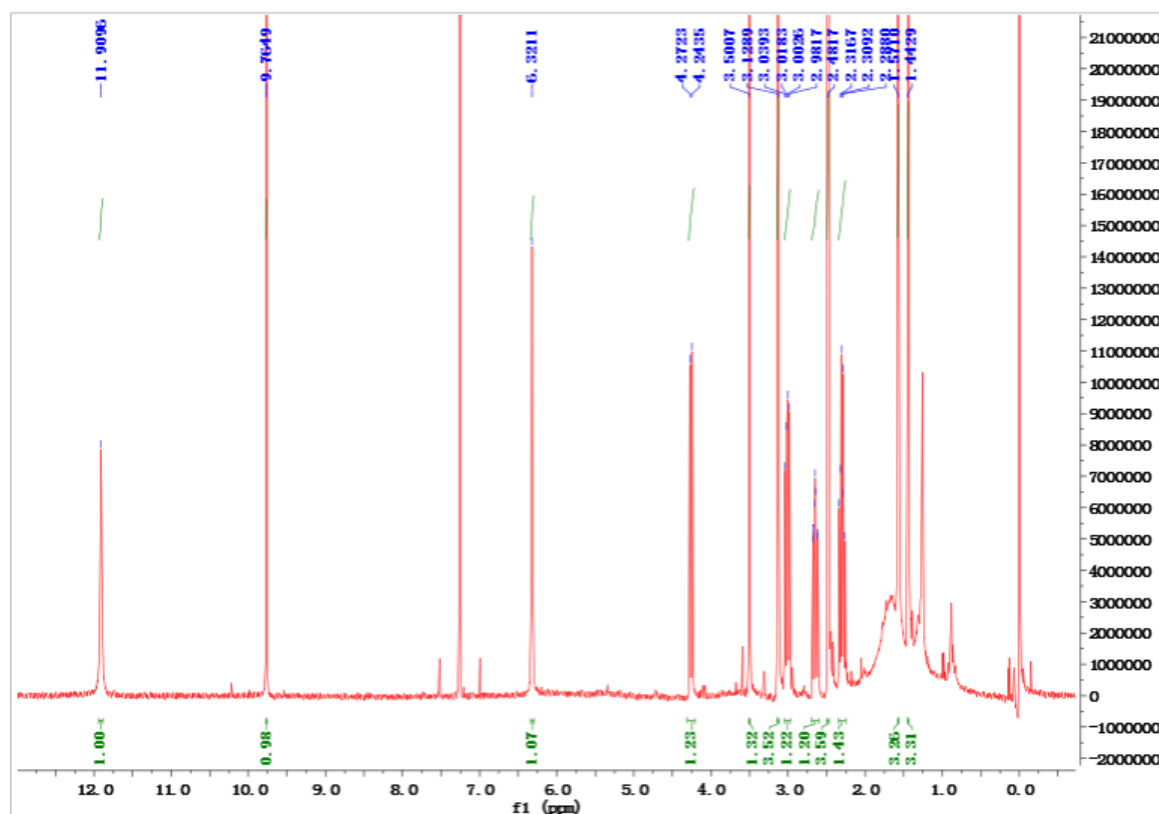


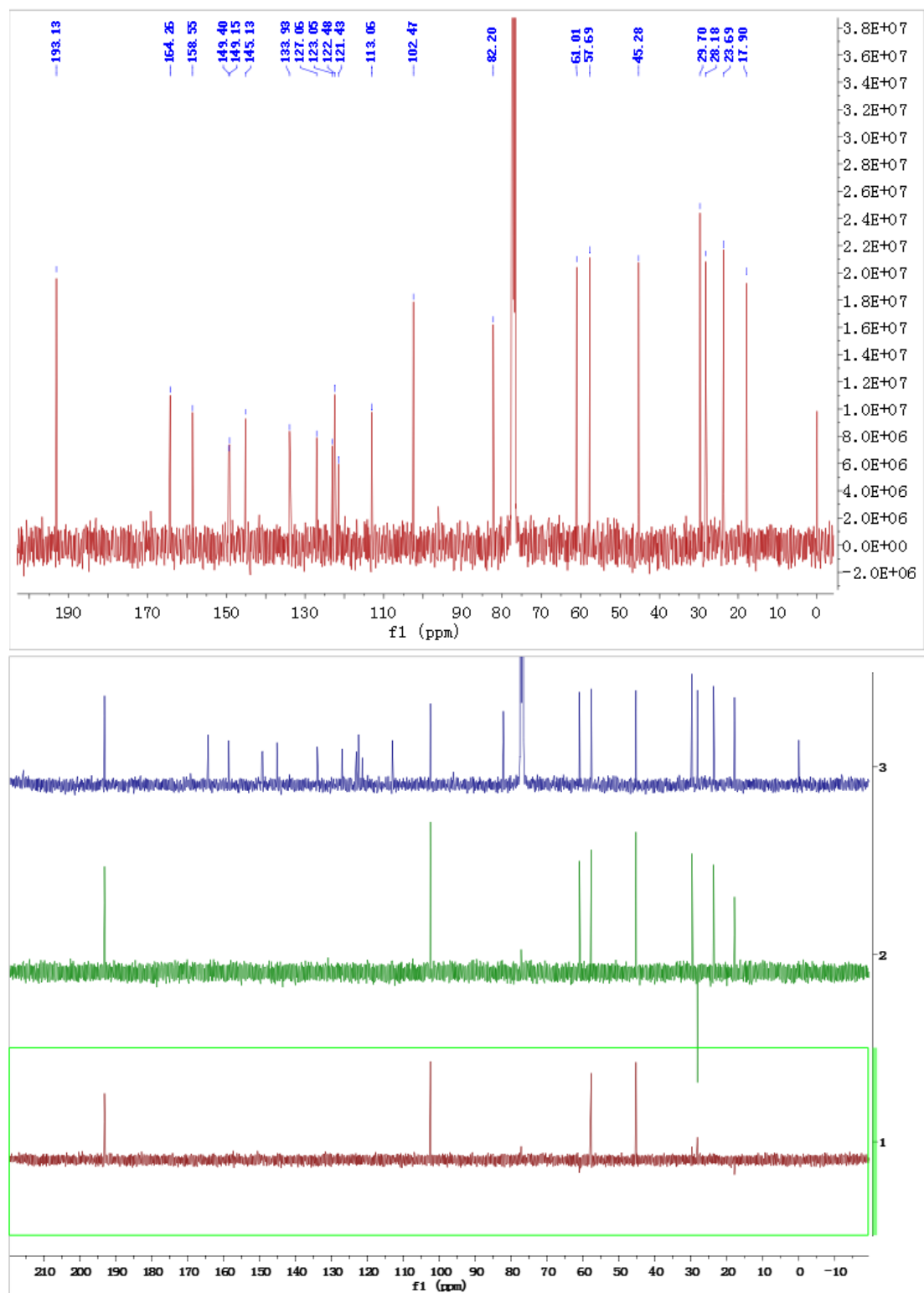
Figure S7. ^{13}C NMR and DEPT (100 MHz) spectra of pestalachloride C (2) in CDCl_3 .

Table S1. ^1H and ^{13}C NMR Data for (\pm)-pestalachloride D (**1**) and pestalachloride C (**2**).

Position	1 ^a		2 ^a	
	δ_{C}	δ_{H} (J in Hz)	δ_{C}	δ_{H} (J in Hz)
1	193.4	10.21, s	193.1	9.76, s
2	112.9	—	113.1	—
3	163.6	—	164.3	—
4	102.1	6.20 (1H, s)	102.5	6.32 (1H, s)
5	158.5	—	158.6	—
6	120.0	—	127.0	—
7	148.5	—	145.1	—
8	38.7	4.71 (1H, d, 6.0)	45.3	4.26 (1H, d, 11.5)
9	121.4	—	123.1	—
10	150.0	—	149.4	—
11	114.0	—	121.4	—
12	135.6	—	133.9	—
13	119.4	—	122.5	—
14	154.0	—	149.2	—
15	17.9	2.42 (3H, s)	17.9	2.48 (3H, s)
16	60.2	3.59 (3H, s)	61.0	3.13 (3H, s)
1' a	27.5	2.81 (2H, overlapped)	28.2	3.01 (1H, dd, 14.6, 8.4)
1' b		—	—	2.64 (1H, ddd, 14.6, 11.3, 1.4)
2'	51.1	2.81 (1H, overlapped)	57.7	2.30 (1H, ddd, 11.5, 11.3, 8.4)
3'	75.6	—	82.2	—
4'	26.8	1.55 (3H, s)	29.7	1.57 (3H, s)
5'	24.6	1.38 (3H, s)	23.7	1.44 (3H, s)
3-OH		11.74, brs,		11.91, brs

^a Measured at 400 MHz (^1H) and 100 MHz (^{13}C), CDCl_3 .