

Supplementary Information

## Pan-Arctic Climate and Land Cover Trends Derived from Multi-Variate and Multi-Scale Analyses (1981–2012). *Remote Sensing* 2014, 6, 2296–2316

Marcel Urban <sup>1,\*</sup>, Matthias Forkel <sup>2</sup>, Jonas Eberle <sup>1</sup>, Christian Hüttich <sup>1</sup>, Christiane Schmullius <sup>1</sup> and Martin Herold <sup>3</sup>

<sup>1</sup> Department for Earth Observation, Friedrich-Schiller-University, Jena 07743, Germany; E-Mails: jonas.eberle@uni-jena.de (J.E.); christian.huettich@uni-jena.de (C.H.); c.schmullius@uni-jena.de (C.S.)

<sup>2</sup> Department for Biochemical Integration, Max-Planck-Institute for Biogeochemistry, Jena 07745, Germany; E-Mail: mforkel@bgc-jena.mpg.de

<sup>3</sup> Centre for Geo-Information, Wageningen University, Wageningen 6700AA, The Netherlands; E-Mail: martin.herold@wur.nl

\* Author to whom correspondence should be addressed; E-Mail: marcel.urban@uni-jena.de; Tel.: +49-3-641-948-887; Fax: +49-3-641-948-882.

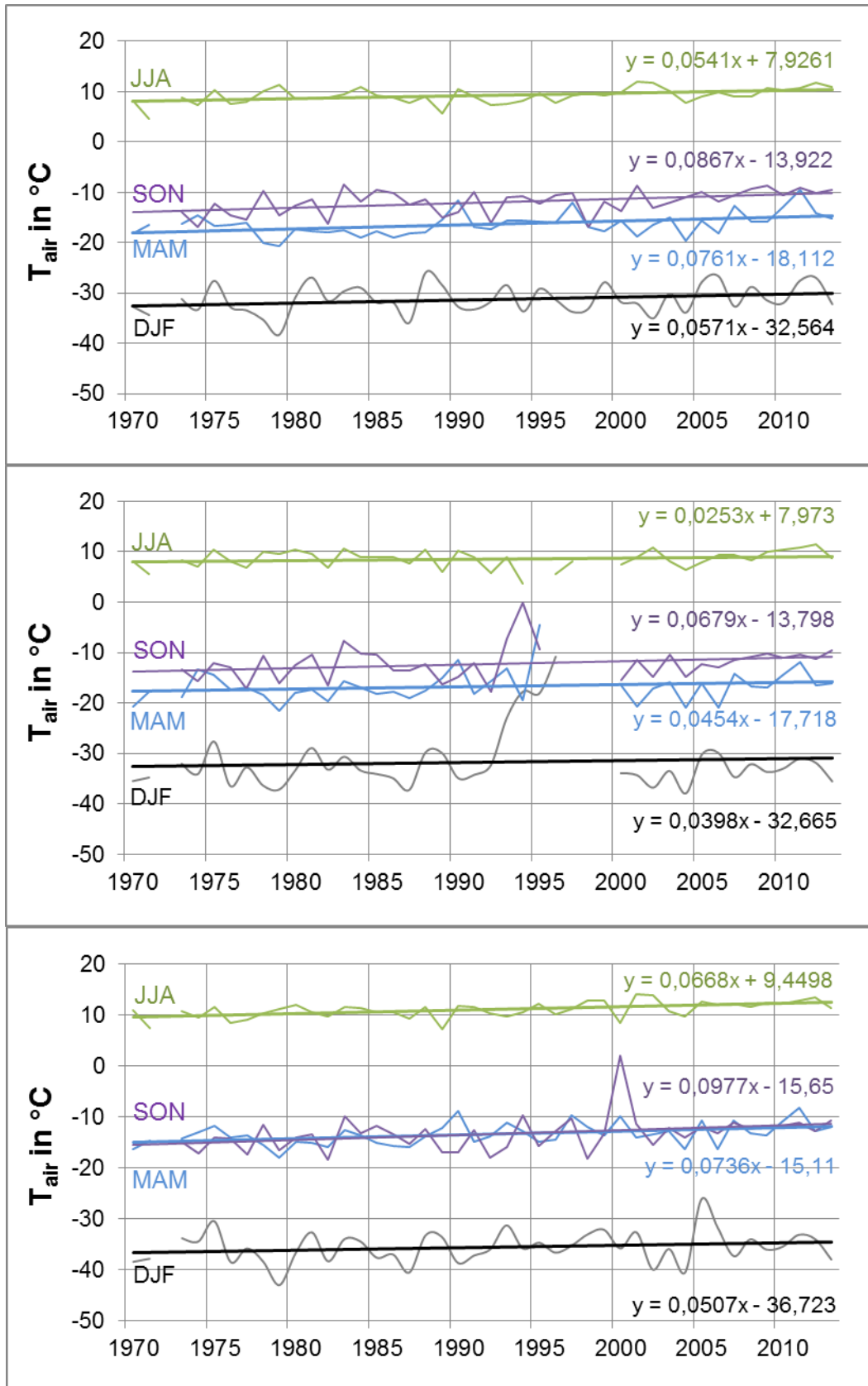
---

This supplementary supports the main text as follows:

**Figure S1.** Arctic boundary map produced by the Arctic Biodiversity Assessment as part of the CAFF (Conservation of Arctic Flora and Fauna) [1].



**Figure S2.** Air-Temperature time series divided by seasons (winter—DJF; spring—MAM, summer—JJA and fall—SON) of meteorological stations at the Taymyr Peninsula (**Top:** Lake Taymyr (74.5 N, 102.5 E); **Middle:** Saskylah (71.9 N, 114.1 E); **Bottom:** Dzalinda (70.1 N, 113.9 E)).



## References

1. CAFF. *Arctic Biodiversity Trends 2010 Selected Indicators of Change*, 1st ed.; Kurvits, T., Alfthan, B., Mork, E., Eds.; Conservation of Arctic Flora and Fauna: Akureyri, Iceland, 2010.

© 2014 by the authors; licensee MDPI, Basel, Switzerland. This article is an open access article distributed under the terms and conditions of the Creative Commons Attribution license (<http://creativecommons.org/licenses/by/3.0/>).