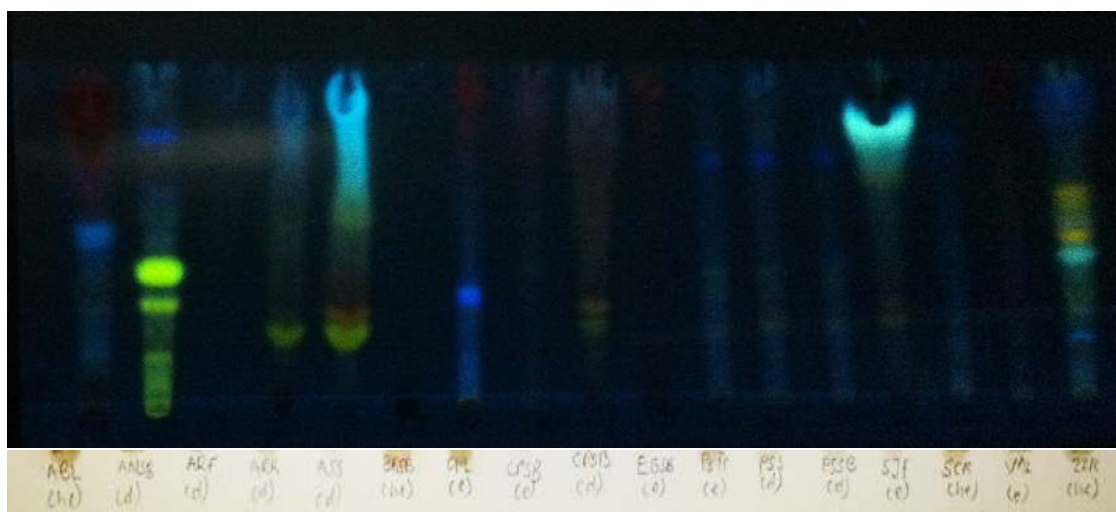
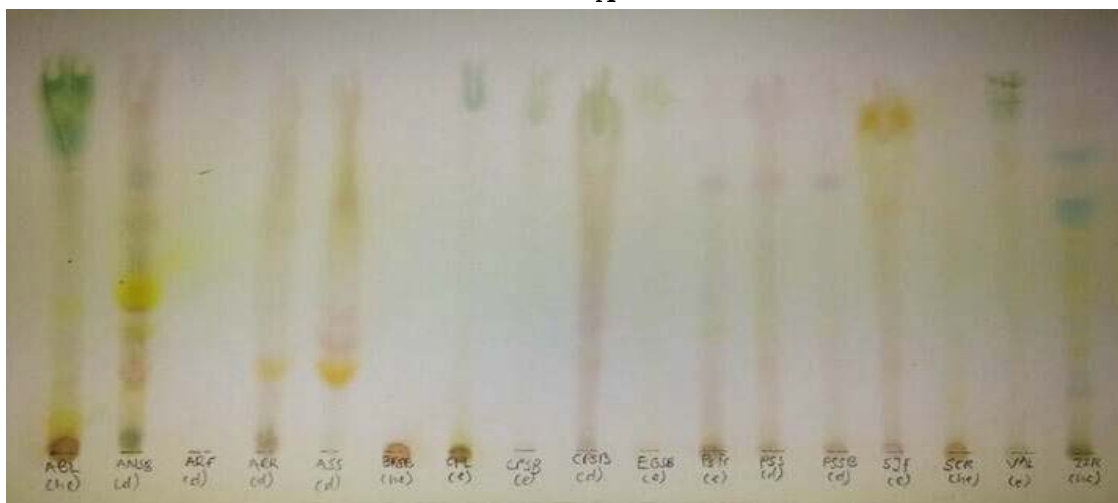


Supplementary Materials: *In Vitro* Activity of Selected West African Medicinal Plants against *Mycobacterium ulcerans* Disease

Patrick Valere Tsouh Fokou, Abena Adomah Kissi-Twum, Dorothy Yeboah-Manu, Regina Appiah-Opong, Phyllis Addo, Lauve Rachel Tchokouaha Yamthe, Alvine Ngoutane Mfopa, Fabrice Fekam Boyom and Alexander Kwadwo Nyarko



A



B

Figure S1. (A) Under the UV lamp at 365 nm; (B) After spraying with 7.5 % (v/v) sulfuric acid and heated at 100 °C. TLC plates developed in CEF system and sprayed with 7.5 % (v/v) sulfuric acid showing varied chemical constituents of the seventeen selected extracts. KEY: ABL(he), *Alstonia boonei* leaves; ANSB(d), *Annickia chloranta* stem bark; ARF(d) *Annona reticulata* fruit, ARR(d), *Annona reticulata* root; ASS(d), *Annona senegalensis* stem; BFSB(he), *Bridelia ferruginea* Stem bark; CPL(e), *Carica papaya* leaves; CPSB(e), *Carica papaya* stem bark; CPSB(d), *Cleistopholis patens* Stem bark; EGSB(e), *Eucalyptus globulus* leaves; PSTr(e), *Polyalthia suaveolens* trunk; PSS(d), *Polyalthia suaveolens* stem, PSSB(d); *Polyalthia suaveolens* stem bark; SJF(e), *Sorindeia juglandifolia* fruit; SCR(he); *Spathodea campanulata* roots; VAL(e), *Vernonia amygdalina* leaves; ZZR(he), *Zanthoxylan zanthoxyloides* roots. A: Under the UV lamp at 365 nm; B: After spraying with 7.5 % (v/v) sulfuric acid and heated at 100 °C.