

Supplementary Materials: Chronic In Vivo Effects of Repeated Exposure to Low Oral Doses of Tetrodotoxin: Preliminary Evidence of Nephrotoxicity and Cardiotoxicity

Andrea Boente-Juncal, Carmen Vale, Manuel Cifuentes, Paz Otero, Mercedes Camiña, Mercedes Rodríguez-Vieytes and Luis Miguel Botana

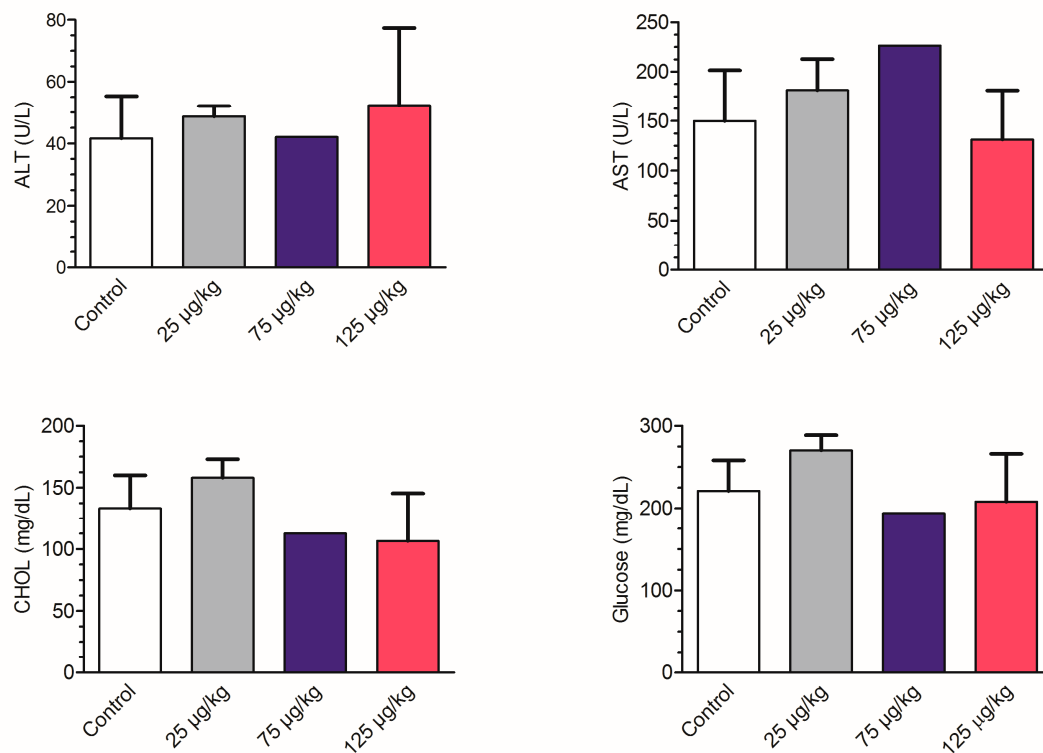


Figure S1. Effects of repeated dose exposure to TTX on blood ALT, AST, glucose, and cholesterol. Data are expressed as mean \pm SEM of 3 to 5 determinations or mean only ($n = 2$) for the dose of 75 $\mu\text{g}/\text{kg}$.

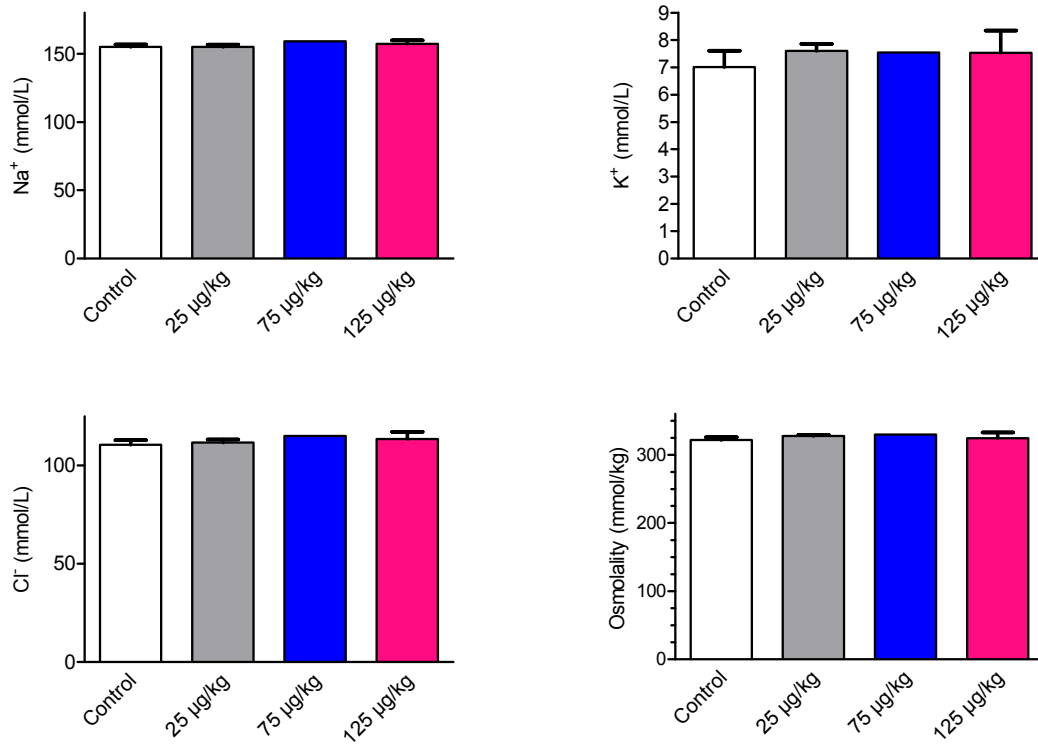


Figure S2. Effects of repeated daily oral exposure of mice to 125 µg/kg TTX on blood electrolyte levels and blood osmolality. Data are expressed as mean ± SEM of 3 to 5 determinations or mean only (n = 2) for the dose of 75 µg/kg.

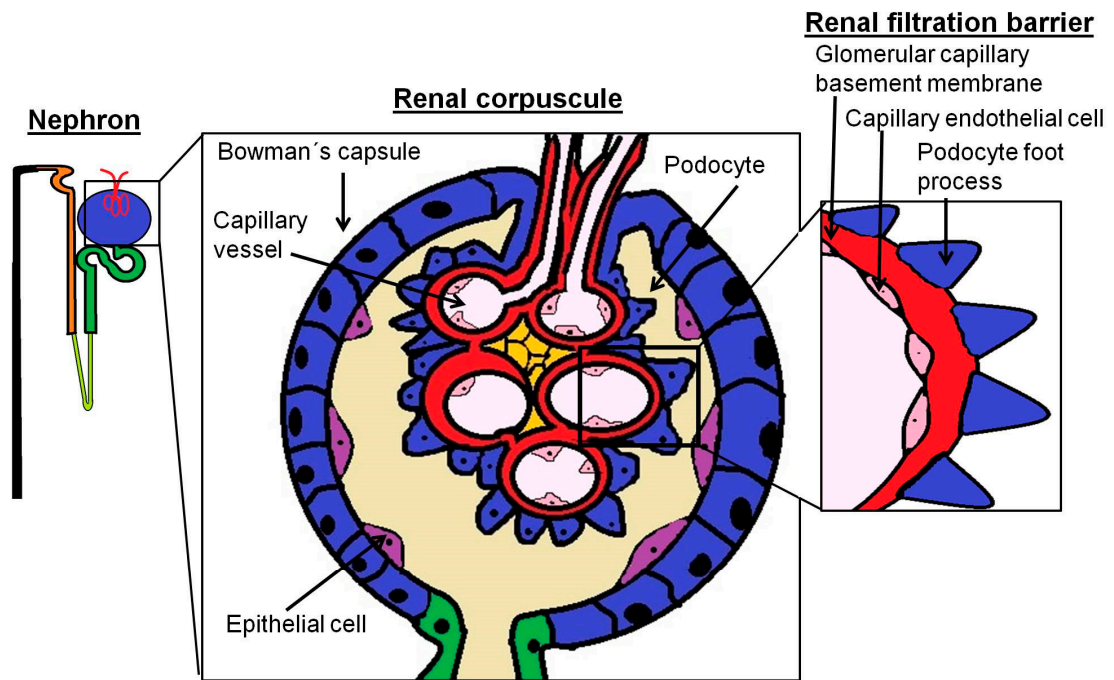


Figure S3. Schematic diagram of the renal corpuscle indicating the main structures altered after chronic oral administration of TTX.