

Supplementary file: Tumor–Microenvironment Interaction: Analysis of Mast Cell Populations in Normal Tissue and Proliferative Disorders of the Canine Prostate

Sabrina Vanessa Patrizia Defourny ¹, Mariarita Romanucci ¹, Valeria Grieco ², Gina Rosaria Quaglione ³, Chiara Santolini ⁴ and Leonardo Della Salda ^{1,*}

¹ Faculty of Veterinary Medicine, University of Teramo, 64100 Teramo, Italy; sdefourny@unite.it (S.V.P.D.); mromanucci@unite.it (M.R.)

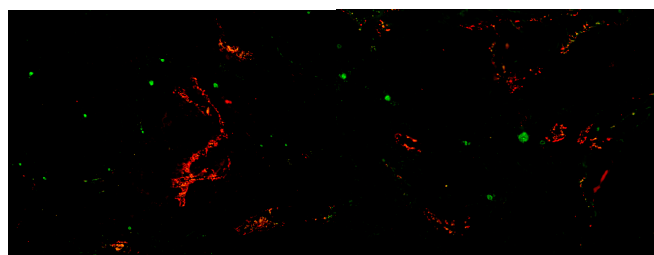
² Department of Veterinary Medicine, University of Milan, 20154 Milan, Italy; valeria.grieco@unimi.it

³ Unità Ospedaliera Complessa, Anatomia patologica, Ospedale G. Mazzini, 64100 Teramo, Italy; gina.quaglione@aslteramo.it

⁴ Veterinary practitioner, 63812 Montegranaro, Italy; chiasan@alice.it

* Correspondence: ldellasalda@unite.it; Tel.: +39-861-266866

Received: 4 December 2018; Accepted: 7 February 2019; Published: 13 February 2019



A

B

Figure S1 Double immunofluorescence. Tryptase-Von Willebrand Factor showing small cluster of mast cells (green) detectable in close proximity to blood vessels (red) in periglandular (A) and intraglandular (B) areas of benign prostate hyperplasia